



**WHITEHOUSE**  
FLEXIBLE TUBING LTD

## **GALVANISED STEEL CONCERTINA NON-PACKED**



### **Construction**

Non packed Concertina is made from a single metal strip that is wrapped round a mandrel with a large deep squarelock section. This stripwound metal hose provides:

**GREAT FLEXIBILITY / HIGH MECHANICAL STRENGTH**

### **Primary Applications**

Non packed Concertina is an extremely flexible metal hose. This stripwound tube is extensively used in industry particularly where high strength and great flexibility is required and is commonly used for:

**DUCTING & EXTRACTION / MATERIAL HANDLING / PROTECTIVE CASINGS etc.**

### **Max Operating Temperature**

+500 Degrees 'C' Max

[Order non-standard lengths here](#)

\*Please note the diameters listed below are all **inside diameters**. Please check this before ordering.



## WHITEHOUSE FLEXIBLE TUBING LTD

We can manufacture to intermediary sizes where required. If your size is not listed, please contact us.

### TECHNICAL DATA

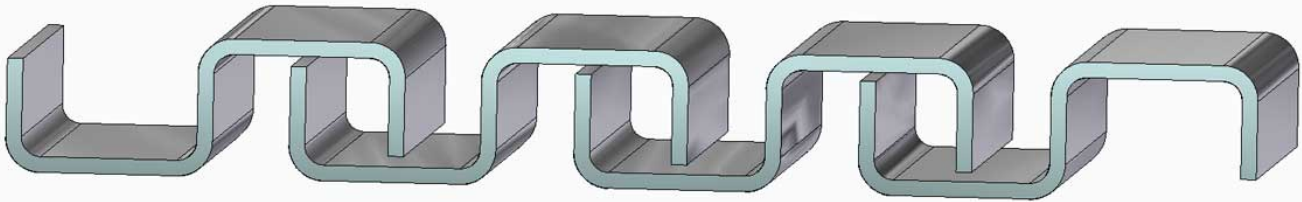
Bore Size	I/D (mm)	O/D (mm)	Inside Bend Radius (mm)	Weight (Kg.) Per 100 Mtrs
2"	51	58	90	124
2.1/2"	63	70	110	155
3"	76	88	133	186
3.1/2"	89	101	156	217
4"	102	114	179	248
4.1/2"	114	126	200	279
5"	127	139	228	310
5.1/2"	140	152	245	341
6"	152	164	266	372
6.1/2"	165	177	289	403
7"	178	190	312	434
8"	203	215	356	496
9"	229	241	401	558
10"	250	262	438	620
11"	279	291	489	682
12"	305	317	534	744

### CONSTRUCTION

Our Non-Packed Steel Concertina tubing is made from deep drawing quality carbon steel to BS 1449 electro – galvanised. The tubing is manufactured by winding profiled metal strip into a tube, the section being a squarelock construction.



**WHITEHOUSE**  
FLEXIBLE TUBING LTD



**APPLICATIONS**



**WHITEHOUSE**  
FLEXIBLE TUBING LTD

Non-packed Concertina tubing offers strength and flexibility. This larger, stronger tube provides an ideal solution for a range of applications. Concertina type tube is constructed with a squarelock section.

- **Max Operating Temperature:** + 500 Degrees C

\*Please note the diameters listed below are all **inside diameters**. Please check this before ordering.

*Manufacturing tolerances – All metallic tubing is manufactured to ID sizes, tolerances are + 0.5mm, – 0.0mm – up to 76mm ID, + 1.0mm, – 0.0mm – anything over 76mm ID*

## **NON-STANDARD LENGTHS**

[Order non-standard lengths here](#)