



WHITEHOUSE
FLEXIBLE TUBING LTD

GALVANISED STEEL GRIPLOCK



Construction

Griplock is made from a single metal strip that is wrapped round a mandrel with a fully interlocked section. This stripwound metal hose construction provides:

GREAT FLEXIBILITY / HIGH MECHANICAL STRENGTH / SMOOTH BORE

Primary Applications

Griplock is a highly versatile hose that is used extensively in industry particularly for:

DUCTING & EXTRACTION / EXHAUSTS / MATERIAL HANDLING / PROTECTIVE CASINGS etc.

Max Operating Temperature

+500 Degrees 'C' Max

[Order non-standard lengths here](#)



WHITEHOUSE
FLEXIBLE TUBING LTD

TECHNICAL DATA

I/D INCHES	I/D MM	O/D MM	INSIDE BEND RADIUS	WEIGHT KG. PER 100 MTRS
1/4 ^ø	6	9	25	16
5/16 ^ø	8	11	30	18
3/8 ^ø	10	13	33	23
1/2 ^ø	12	16	45	30
5/8 ^ø	16	20	55	33
3/4 ^ø	20	24	59	34
7/8 ^ø	22	26	63	40
1 ^ø	25	29	78	49
1.1/8 ^ø	28	33	90	62
1.1/4 ^ø	32	37	96	75
1.3/8 ^ø	35	40	103	88
1.1/2 ^ø	38	45	110	101
1.5/8 ^ø	41	48	115	108
1.3/4 ^ø	45	52	123	118
1.7/8 ^ø	48	55	129	126
2 ^ø	51	58	135	135
2.1/8 ^ø	54	61	143	137
2.1/4 ^ø	57	64	150	139
2.3/8 ^ø	60	67	158	141
2.1/2 ^ø	63	70	165	142
2.3/4 ^ø	70	77	180	168
3 ^ø	76	83	195	225



WHITEHOUSE
FLEXIBLE TUBING LTD

3.1/8	79	84	260	230
3.1/4	83	88	269	245
3.3/8	86	91	280	252
3.1/2	89	94	290	261
3.5/8	92	97	302	270
3.3/4	95	100	312	285
3.7/8	98	103	322	292
4	102	107	328	310
4.1/4	108	115	350	315
4.1/2	114	121	369	325
4.3/4	121	128	386	333
5	127	134	403	340
5.1/2	140	147	446	380
6	152	159	485	419
7	178	185	560	485
8	203	210	640	550
9	229	236	718	615
10	254	261	797	680
11	279	286	873	760
12	305	312	950	840
13	330	337	1030	898
14	356	363	1112	955
15	381	388	1188	1025
16	406	413	1268	1090
17	432	439	1348	1160
18	457	464	1425	1225
19	483	490	1504	1290



WHITEHOUSE FLEXIBLE TUBING LTD

202

508

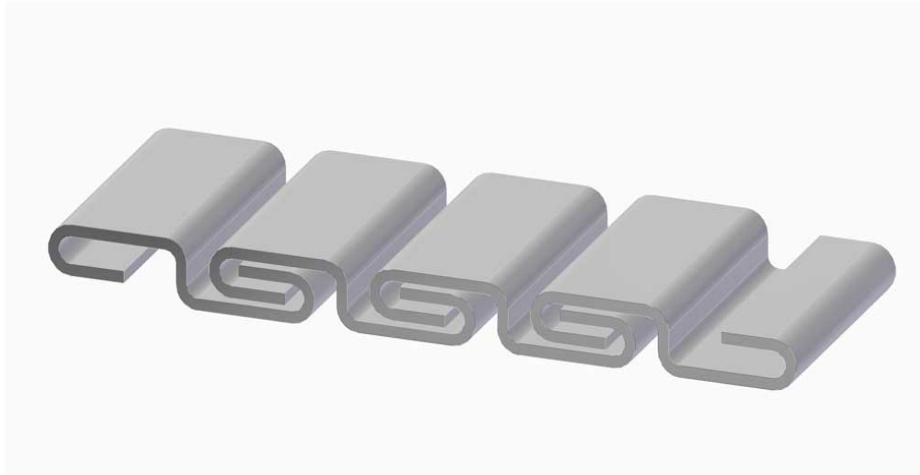
515

1582

1360

CONSTRUCTION

Galvanised Steel Griplock Tubing is made from deep drawing quality carbon steel to BS.1449 electro-galvanised. The tube is manufactured by winding profiled metal strip into a tube, the edges being completely interfolded.



APPLICATIONS

Griplock tubing has a high tensile strength and strong resistance to crushing. This tube is particularly well suited to absorbing vibration, thermal expansion and noise attenuation. Ducting of air, smoke, fumes, etc. Dry bulk handling; ash, dust, paper trim, grain, plastic pellets etc. Protective capillary casing of instrument cables, wires etc.

SPECIAL FEATURES

Griplock is available 'Loose / Floppy', 'Stiff / Stayput' up to 76mm ID. If it is not required to be especially floppy or stayput the tubing is supplied with Medium Flexibility (Mid Flex) as standard. All sizes over 76mm ID will be supplied mid-flex. Please state the flexibility required in the notes section when placing your order.

Griplock Section

- **Max Operating Temperature:** +500 Degrees C

*Please note the diameters listed below are all **inside diameters**. Please check this before ordering.

Manufacturing tolerances - All metallic tubing is manufactured to ID sizes, tolerances are + 0.5mm, - 0.0mm - up to 76mm ID, + 1.0mm, - 0.0mm - anything over 76mm ID



WHITEHOUSE
FLEXIBLE TUBING LTD

NON-STANDARD LENGTHS

[Order non-standard lengths here](#)