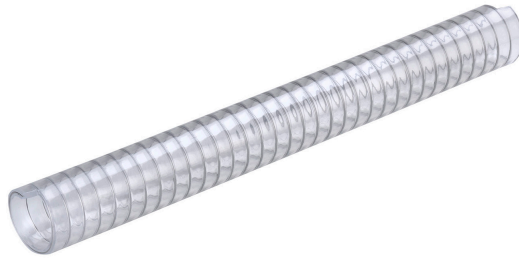




**WHITEHOUSE**  
FLEXIBLE TUBING LTD

## PLUTONE PU



Transparent hose made from ether-based TPU with AISI 302 stainless steel spiral and polyester reinforcement. Inside and outside completely smooth to enhance flow properties and allow easy cleaning and sterilization processes. Transparent for easy detection. Highly neutral in taste and odor, it preserves the organoleptic properties of the medium. Excellent resistance to Hydrolysis and microbes. Curing-free material. It can be conductive by grounding the spiral.

**Application Fields:** Suction and delivery hose suitable for pharmaceutical and food industries. Excellent for transferring powders, pills, tablets, pharmaceutical liquid solutions, flours, drinks, wine, vinegar and spirits with max 20% alcohol content. Food grade according to EU Regulation 10/2011 (classes A, B, C, D2, E), FDA regulations (Title 21 CFR 177.2600, classes D, E, F). Compliant with the pharmaceutical standard USP CLASS VI.

- **Temp Range:** -40 to +90°C
- **Size Range:** 8 - 76mm
- **Material:** Ether based TPU
- **Reinforced:** AISI 302 stainless steel

[Plutone PU Datasheet](#)

[Plutone PU Food Declaration](#)



**WHITEHOUSE**  
FLEXIBLE TUBING LTD

**TECHNICAL DATA**

CODE	Ø INT.	Ø OUT.	WEIGHT	W.P.	B.P.	VACUUM	BENDING	COIL LGTH.	VOLUME
	mm	mm	g/m	bar	bar	m H2O	mm	m	m3
PQ010080014200*	8	14,2	140	2,5	12,5	9,5	40	60	0,024
PQ010120018000*	12	18	180	2,5	12,5	9,5	60	60	0,033
PQ010160022400*	16	22,4	245	2,5	12,5	9,5	80	60	0,048
PQ010200027000*	20	27	320	2,5	12,5	9,5	100	60	0,086
PQ010250033000	25	33	460	2	10	9,5	130	60	0,127
PQ010300038000*	30	38	535	2	10	9,5	150	60	0,146
PQ010320040400*	32	40,4	595	2	10	8,5	160	60	0,155
PQ010380047000	38	47	740	2	10	8,5	190	30	0,120
PQ010400049200*	40	49,2	790	2	10	8,5	200	30	0,126
PQ010508060800	50,8	60,8	1165	1,5	7,5	8	250	30	0,263
PQ010600071800*	60	71,8	1580	1,5	7,5	8	300	30	0,310
PQ010630074800*	63	74,8	1650	1,5	7,5	8	320	30	0,323
PQ010760088200*	76	88,2	2020	1,5	7,5	7	380	30	0,508

**DOWNLOADS**

[Plutone PU Datasheet](#)

[Plutone PU Food Declaration](#)

Plutone PU Datasheet and Food Declaration